

OAK WOOD HEIGHTS

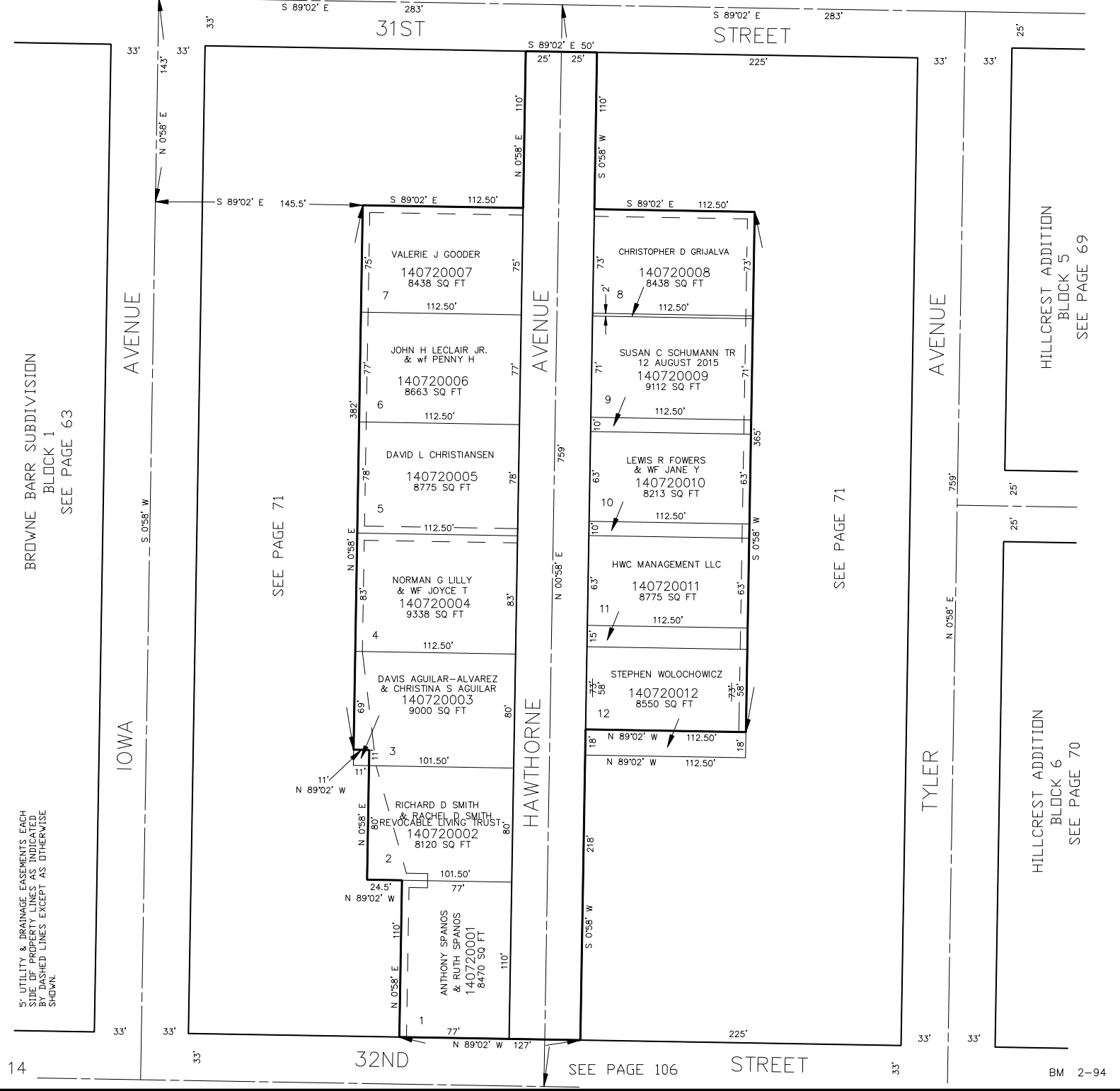
IN OGDEN CITY

TAXING UNIT: 25

SEE PAGE 105

SCALE 1" = 50'

FOR COMPLETE ENG DATA SEE ORIGINAL DEDICATION PLAT IN BOOK 13, PAGE 28 OF RECORDS.



BROWNE BARR SUBDIVISION
BLOCK 1
SEE PAGE 63

SEE PAGE 71

SEE PAGE 71

HILLCREST ADDITION
BLOCK 5
SEE PAGE 69

HILLCREST ADDITION
BLOCK 6
SEE PAGE 70